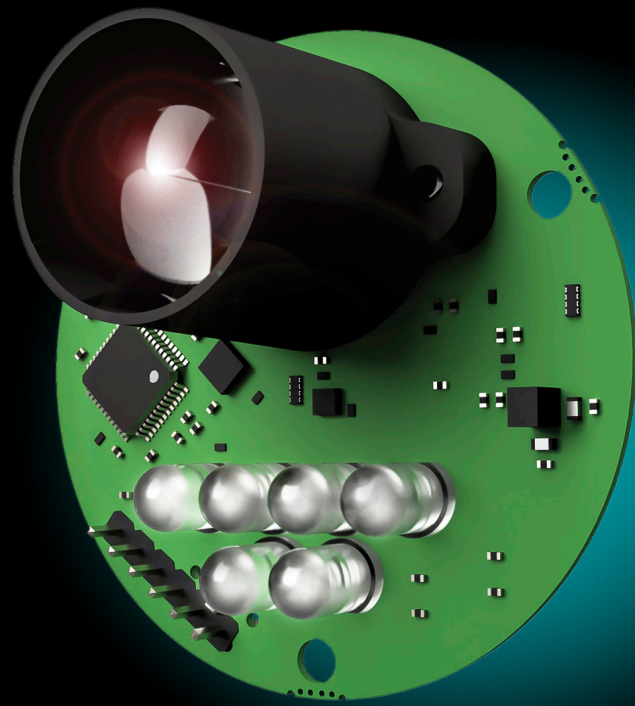


# LeddarTech®



## LEDDARONE

**SINGLE-SEGMENT  
LIDAR SENSOR MODULE**

# LEDDARONE

## RELIABLE PRESENCE DETECTION, ACCURATE DISTANCE AND LEVEL MEASUREMENTS

### LEDDARONE OVERVIEW

The LeddarOne single-element LiDAR sensor module is dedicated to detecting objects and providing precise distance measurements at up to 40 meters.

The narrow LED illumination beam offers excellent overall range and performance, supported by Leddar technology's patented digital signal processing algorithms. This single detection element sensor module is particularly suitable for applications such as level sensing, proximity measurement, security and surveillance, vehicle detection and height warning, optical range finding, and drone altimetry, just to name a few.

The module's compact size, low power consumption and high accuracy gives developers and integrators great flexibility to enhance their own branded products and applications.

### INTERFACES AND COMMUNICATION

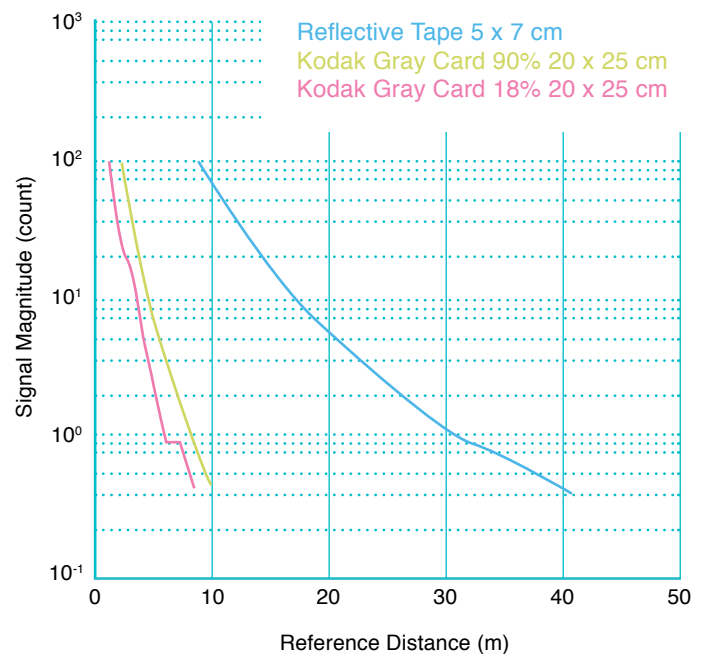
The LeddarOne offers an efficient six-pin interface, including a 3.3 V UART link, or RS-485. The module uses the MODBUS protocol, providing a robust, standard register-access interface for easy configuration and acquisition of measurement data. An interrupt signal is also provided to facilitate low-latency data acquisition. The power and interface signals are included on a six-pin standard 0.1" pitch header. The RS-485 option, in combination with MODBUS, makes it easy to integrate multiple sensors with an RS-485 network.

### CONFIGURATION SOFTWARE AND DEVELOPMENT KIT (SDK)

To facilitate development and integration, dedicated configuration software (Leddar Configurator) and a development kit (Leddar Enabler SDK) are included with the module. The Leddar Configurator enables users to set up the sensor, and

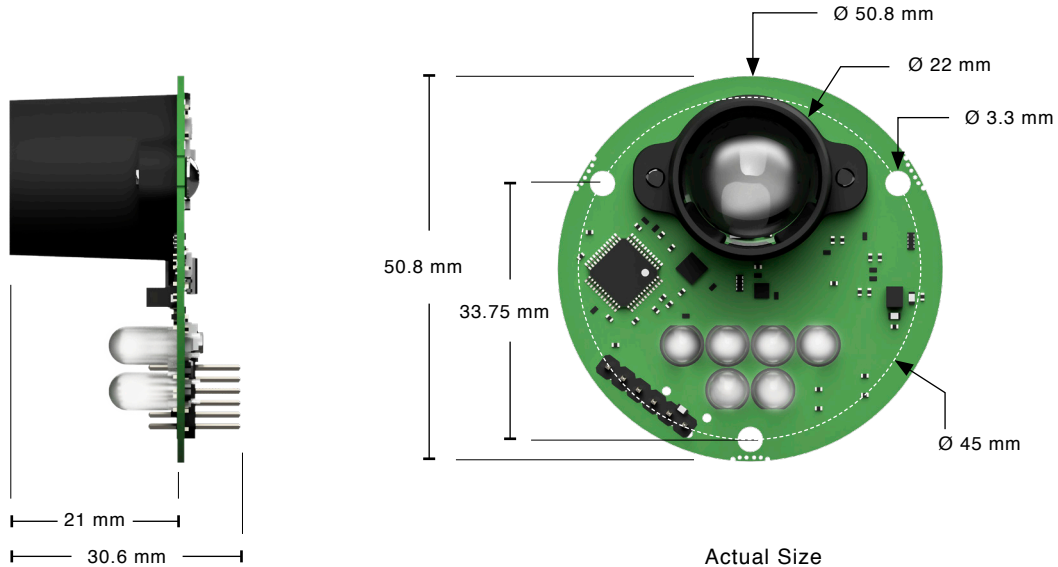
view, record and play back sensor measurement data. The Leddar Enabler SDK includes an example program and complete source code that demonstrates configuration and data acquisition through the serial link and MODBUS protocol. The code can be easily ported to any system, resulting in fast integration in the final application.

### AMPLITUDE VS. DISTANCE



The chart above displays the detection amplitude of a sensor for three reference objects (photographic gray cards and reflective tape) of varying size and reflectivity.

# LEDDARONE



## INTERFACE PINOUTS

1	2	3	4	5	6
GND	IRQ	5 V	RX or RS-485+	TX or RS-485-	RESET_N

## LEGEND:

RX/TX = 3.3 UART

RS-485+ / RS-485- = RS-485

The power and interface signals are included on a six-pin standard 0.1" pitch header. The RS-485 option, in combination with MODBUS, makes it easy to integrate multiple sensors with an RS-485 network.

## CHARACTERISTICS

- **Beam** 3°
- **Diameter** 50.8 mm
- **Wavelength** 850 nm
- **Power supply** 5 VDC
- **Interfaces** 3.3 V UART or RS-485
- **Weight** 14 g

## SYSTEM PERFORMANCE

- **Detection range** 0 to 40 meters (130 ft)<sup>1</sup>
- **Accuracy** 5 cm
- **Data refresh rate** Up to 140 Hz
- **Operating temperature range** -45 °C to +85 °C
- **Distance precision** 5 mm
- **Distance resolution** 3 mm
- **Power consumption** 1.3 W
- **Meets IEC 62471 2006 criteria** Exempt lamp classification

<sup>1</sup> Varies according to target.

## OPTIONAL ACCESSORIES

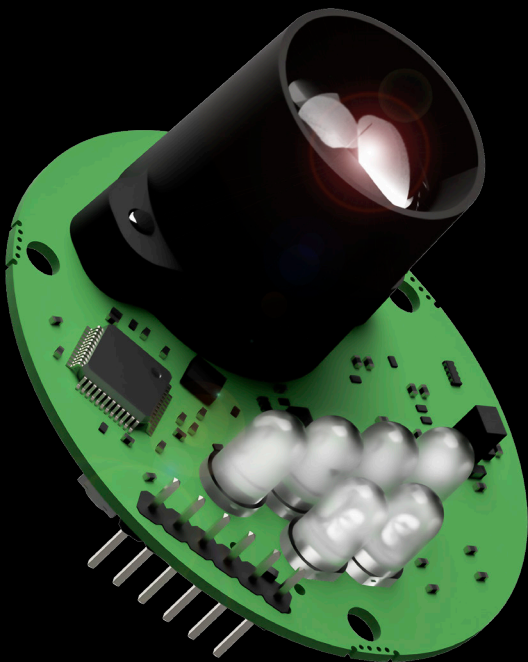
- **USB to 3.3 V UART cable** (part number: 74D0002)
- **USB to RS-485 cable** (part number: 74D0001)
- **Bracket for standard tripod mount** (1/4" – 20) (part number: 74D0003)
- **Starter kit, including bracket, screws and cable**

## MECHANICAL INTEGRATION

- **Easy to install** (three screws)
- **Ideal for NPT fitting**

# LEDDARONE

**LOW-COST, RELIABLE  
PRESENCE DETECTION.  
ACCURATE DISTANCE AND  
LEVEL MEASUREMENTS.**



## OVERVIEW

### ✓ LeddarOne Features

- 3-degree diffuse beam
- 0 to 40 meter detection range (130 ft)
- Rapid data acquisition time up to 140 Hz
- Very compact (2" diameter)

### ✓ LeddarOne Benefits

- Proven reliability, even in harsh conditions
- Immune to ambient light
- No moving parts, for ultimate robustness
- Easy to integrate, includes Leddar Enabler SDK
- Low power consumption

#### LeddarTech HQ

4535 Wilfrid-Hamel Blvd, #240  
Quebec City, QC G1P 2J7  
Canada

Phone: 1 418-653-9000  
Toll Free: 1 855-865-9900  
Fax: 1 418-653-9099

[leddartech.com](http://leddartech.com)

The content of this datasheet is subject to change without notice. Leddar™ is a registered trademark of LeddarTech Inc. Leddar® technology is covered by one or more of the following U.S. patents: 7,855,376 B2, 7,554,652, 8,319,949 B2, 8,310,655, 8,242,476, 8,908,159, 8,767,215 B2 or international equivalents. Other patents pending. The content of this datasheet is subject to change without notice. Find the most recent version of our datasheet on our website.  
Copyright LeddarTech Inc. © All rights reserved.

LeddarTech, the LeddarTech logo, Leddar, LeddarCore, are trademarks or registered trademarks of LeddarTech Inc. / Ver. 052017  
The content of this spec sheet is subject to change without notice. 54C0004-2

